

MAIN IDEA GAME SHOW

EXTREME SPORTS	WEIRD BUGS	FOOD ORIGINS	FAMOUS WOMEN SCIENTISTS	EXTREME ENVIRONMENTS
100	100	100	100	100
200	200	200	200	200
300	300	300	300	300
400	400	400	400	400

EDITABLE

SELF-CHECKING

NO PREP

GRADES 3-6



INTERACTIVE REVIEW GAME

WORKING SCOREBOARD

The scoreboard works ONLY in the PowerPoint version. Google Slides, unfortunately, does not have the same capabilities so you will need to track the scores on that version.



INTERACTIVE GAMEBOARD

The point values only disappear after used on the Powerpoint version. Google Slides, unfortunately, does not have the same capabilities so you will need to keep track with the included question tracker.

The gameboard features a grid of 30 question cards (6 rows by 5 columns). The categories and their corresponding point values are:

EXTREME SPORTS	WEIRD BUGS	FOOD ORIGINS	FAMOUS WOMEN SCIENTISTS	EXTREME ENVIRONMENTS
100	100	100	100	100
200	200	200	200	200
300	300	300	300	300
400	400	400	400	400
500	500	500	500	500

On the right side of the board, there are several navigation elements:

- A vertical stack of five colored chevrons (yellow, green, purple, pink, teal) pointing downwards.
- The text "GAME SHOW" written vertically in large, bold, black letters.
- The text "MAIN IDEA" written vertically in large, bold, black letters.
- A "SCORE BOARD" button in a grey box.
- A "RESET PAGE" button in a pink box.

EDITABLE QUESTIONS & ANSWERS

All questions and answers are editable, so you can change out the question if you'd rather it be something else. Images and categories are not editable.

QUESTIONS

STORY STRUCTURE FOR 200

Miles grabbed his duffel bag and left the police station in a hurry, ready to get out on his rounds. After driving for a while, he found his suspect. He reached into the passenger's seat for the duffel bag and rummaged for his spy camera, only to find that it was missing! Miles specifically remembered placing the camera in his bag. Tracing his steps in his mind, he only remembered bumping into the new recruit at the front desk. Remotely, Miles activated the spy camera and was surprised to see a plate of tasty donuts in front of the camera. "Ugh, he really thought it was a pen!" Miles sighed, before turning around to return to the police station and retrieve the pen from the rookie officer.

What is the **conflict** of the story?



SCORE-BOARD

ANSWER

GAME BOARD



STORY STRUCTURE FOR 200

Miles grabbed his duffel bag and left the police station in a hurry, ready to get out on his rounds. After driving for a while, he found his suspect. He reached into the passenger's seat for the duffel bag and rummaged for his spy camera, only to find that it was missing! Miles specifically remembered placing the camera in his bag. Tracing his steps in his mind, he only remembered bumping into the new recruit at the front desk. Remotely, Miles activated the spy camera and was surprised to see a plate of tasty donuts in front of the camera. "Ugh, he really thought it was a pen!" Miles sighed, before turning around to return to the police station and retrieve the pen from the rookie officer.

What is the **setting** of the story?



SCORE-BOARD

ANSWER

GAME BOARD



ANSWERS

STORY STRUCTURE FOR 200

(Answers may vary slightly.)

He reached into the passenger's seat for the duffel bag and rummaged for his spy camera, only to find that it was missing!



Bonus question for 100 extra points

What is the genre of the story?



SCORE-BOARD

BONUS ANSWER

BACK TO QUESTION

GAME BOARD



STORY STRUCTURE FOR 200

(Answers may vary slightly.)

Miles is in his car and back and forth from police station.



Bonus question for 100 extra points

What is the genre of the story?



SCORE-BOARD

BONUS ANSWER

BACK TO QUESTION

GAME BOARD



*Examples used are from ELA Skill Review Game Show as a reference and are not specific to this game.

CATEGORY 1: EXTREME SPORTS

Students are given a passage and they must determine the main idea.

EXTREME SPORTS FOR 100

Rock climbing is an extreme sport that requires a lot of skill. Many people start learning to rock climb in gyms by using climbing walls, but expert rock climbers can even climb while upside down! They must be very strong and practice a lot to be able to do this. Rock climbers must use special ropes and protective equipment to stay safe while climbing. One wrong move can mean a rock climber falls.

Write the best main idea sentence for the passage.

SCORE BOARD ANSWER GAME BOARD

EXTREME SPORTS FOR 200



White water rafting is a fun and exciting sport that people enjoy around the world. The difficulty and dangers of white water rafting depends on the class of rapids navigated. There are six different

classes of rapids. The first 2 classes of rapids are very basic and easy. All you have to know is how to paddle to handle these rapids. Class 3 rapids require more experience. Class 4 and 5 rapids may involve bigger rocks, waves, and require expertise in rafting. Class 6 rapids are very dangerous, even for experienced rafters.

Write the best main idea sentence for the passage.

SCORE BOARD ANSWER GAME BOARD

EXTREME SPORTS FOR 300

Snowboarding is a fun, but difficult winter sport that is sometimes dangerous. One of the most common injuries among snowboarders are wrist injuries. Sometimes, this is because snowboarders don't take lessons. During snowboarding lessons, instructors teach students how to fall safely. It's best to stretch out your whole arm instead of breaking your fall with a bent wrist. Another way snowboarders can help avoid this injury is by using wrist guards. Other snowboarding injuries affect the head or the knees.

Write the best main idea sentence for the passage.

SCORE BOARD ANSWER GAME BOARD

EXTREME SPORTS FOR 400

What's that up there in the sky that looks like a kite? It's a paraglider! This extreme sport involves flying through the air using a paraglider wing or canopy. The pilot is connected to the wing with a harness. Many strings stretch from the harness to the canopy that help control the paraglider. To pilot a paraglider, you must know how to take off, steer, change altitude, brake, and land. This sport isn't easy, but paragliders have a lot of fun while flying through the air.



Write the best main idea sentence for the passage.

SCORE BOARD ANSWER GAME BOARD

EXTREME SPORTS FOR 500

Mountain biking first began in the late 1800s. It was then that soldiers in Montana modified bicycles to be ridden in off-road conditions. Later, people continued to enjoy riding bicycles on unpaved surfaces. In 1966, the word mountain bicycle was used for the first time. Before long, groups of mountain bikers were created and the first mountain biking competitions were held. Mountain biking was finally included as an Olympic sport in 1996.



Write the best main idea sentence for the passage.

SCORE BOARD ANSWER GAME BOARD

CATEGORY 2: WEIRD BUGS

Students are given a passage and they must determine the main idea.

WEIRD BUGS FOR 100

Dung beetles are important cleaners in nature. These beetles eat the poop of other animals. This helps the dung break down and turn into soil. Many dung beetles are rollers, which means they roll dung into balls. Then, they lay their eggs in the ball so that when the larva hatch, there's a meal waiting for them. Thanks to dung beetles, the nutrients in animal feces return to the soil quickly.



Write the best main idea sentence for the passage.



SCORE BOARD

ANSWER

GAME BOARD

WEIRD BUGS FOR 200

Giraffe weevils of Madagascar have a very unique way of laying eggs. The bugs get their name from their very long necks, which the males use for fighting. After mating, the female weevil folds a leaf in half using her strong legs. Then, she begins to roll the leaf up to create a sort of pocket. Then, she lays her egg in the pocket. She then continues to roll the leaf all the way up, securing the roll at the top. Finally, she detaches the leaf so that the egg hatches on the forest floor.



Write the best main idea sentence for the passage.



SCORE BOARD

ANSWER

GAME BOARD

WEIRD BUGS FOR 300

Goliath beetles are one of the heaviest and biggest beetles in the world. They grow up to 4.5 inches long and weigh up to 3.5 ounces. These large beetles grow so big by eating animal dung, fruit, and dead plant material. Even though they're big, goliath beetles can fly! Scientists have studied insects all over the world and haven't found any that are heavier than this beetle.



Write the best main idea sentence for the passage.



SCORE BOARD

ANSWER

GAME BOARD

WEIRD BUGS FOR 400

Hercules beetles can measure up to 7.5 inches long, making them some of the biggest beetles in the world. However, that's not how the beetle, which lives in Central and South America, got its name. The Hercules beetle is known for being very strong. Some adult beetles can lift up to 850 times their weight. If a human could do that, they could carry about 7 elephants! They use their strength to dig and move twigs and leaves so that they can hide.



Write the best main idea sentence for the passage.



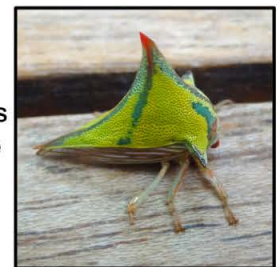
SCORE BOARD

ANSWER

GAME BOARD

WEIRD BUGS FOR 500

Thorn bugs, or treehoppers, are a type of bug that live in warm areas of the world. Specifically, they live in the Americas and Southeast Asia. They got their name from their unique shape that helps them hide. They look just like thorns, the tip of which is sharp enough to puncture your skin. These bugs are usually green, brown, or blackish in color, which helps them blend into their surroundings. Using their body shape as camouflage is their main defense mechanism.



Write the best main idea sentence for the passage.



SCORE BOARD

ANSWER

GAME BOARD

CATEGORY 3: FOOD ORIGINS

Students are given a passage and they must determine the main idea.

FOOD ORIGINS FOR 100

Did you know that chewing gum comes from trees? People in ancient civilizations have been chewing gum for a long time. In fact, before there were gum factories and lots of flavors and colors, people got their gum from trees. Actually, today, many brands still use natural gum from trees as the base for their chewing gum. Some trees that are still used to make gum are chicle, natural rubber, and the cow tree.

Write the best main idea sentence for the passage.

SCORE BOARD

ANSWER

GAME BOARD

FOOD ORIGINS FOR 200



Ketchup, a popular sauce, has a long and complicated history. It's hard to believe, but the original ketchup didn't even have any tomatoes in it! The name comes from China, where the original sauce was first made. This ketchup, made in the 17th century, was a mix of pickled fish and spices. Later, English colonists tasted it and made mushroom-based ketchup. Then, a recipe from the 1800s used tomatoes and anchovies. Finally, cooks in America began making ketchup much more like we know it today.

Write the best main idea sentence for the passage.

SCORE BOARD

ANSWER

GAME BOARD

FOOD ORIGINS FOR 300



The coffee plant, which now grows all over the world, is originally from Eastern Africa. Scientists aren't exactly sure, but many believe the first plant may have grown in Ethiopia. Arab people discovered how to use coffee beans to make a drink. The drink quickly grew popular, so people began growing coffee plants in other areas of the world. Now, there aren't many wild coffee plants in Ethiopia, even though this is the plant's original home.

Write the best main idea sentence for the passage.

SCORE BOARD

ANSWER

GAME BOARD

FOOD ORIGINS FOR 400

When you think of a potato, you usually think of light brown skin and a white or yellowish inside. However, some varieties of potatoes are pink, red, purple, or deep yellow. The colors vary because of the different amounts of pigment in the potatoes. The yellow or gold-colored potatoes have more vitamin A in them. In any case, the different colors are beautiful on a plate.

Write the best main idea sentence for the passage.

SCORE BOARD

ANSWER

GAME BOARD

FOOD ORIGINS FOR 500

Thanks to the ancient civilizations of Mexico and Central America, you can eat chocolate today. It was the Mayans and Aztecs who first used the seeds inside the cacao fruit to make chocolate. They enjoyed chocolate as a drink. It was very different from the hot chocolate we drink today. Instead of adding sugar, milk, and marshmallows, they seasoned it with chili pepper, allspice, vanilla, and honey. When the Europeans arrived in Central America, they saw how the Mayans and Aztecs drank it. They took the beans back with them to Europe, where people added sugar, creating what we know to be hot chocolate.



Write the best main idea sentence for the passage.

SCORE BOARD

ANSWER

GAME BOARD

CATEGORY 4: FAMOUS WOMEN SCIENTISTS

Students are given a passage and they must determine the main idea.

FAMOUS WOMEN SCIENTISTS FOR 100

Madame Marie Curie was one of the world's first well-recognized women scientists. She is known for discovering radium and polonium which are chemical elements. She won the Nobel Prize in Physics with her husband and another physicist in 1903. Then, she won the Nobel Prize in Chemistry in 1911. In addition, she is known for her work to help mobilize x-ray machines during World War II. With these machines, doctors could locate bullets and see broken bones. Even though she is no longer alive, she is still a famous woman scientist today.



Write the best main idea sentence for the passage.

SCORE-BOARD

ANSWER

GAME BOARD

FAMOUS WOMEN SCIENTISTS FOR 200

Grace Hopper was a curious person her whole life. According to her mother, when she was just 7 years old, she took apart 7 alarm clocks to see how they worked. Later, she went on to graduate from Vassar College. She loved learning so much that she earned both a master's degree and a PhD in math. Even in her jobs working on some of the first computers, Grace remained curious. Even though no one believed it would be possible, she thought she could program machines to understand English. She proved everyone wrong when she helped develop COBOL. It was one of the first computer programming languages. Grace received many awards and recognitions for her accomplishments and contributions to computer science. She died in 1992.



Write the best main idea sentence for the passage.

SCORE-BOARD

ANSWER

GAME BOARD



FAMOUS WOMEN SCIENTISTS FOR 300

Marie Tharp was a skilled geologist who made an important discovery but wasn't given credit for it. Now, we know that she played an important role in discovering one of the Earth's most important features: the Mid-Atlantic Ridge. This ridge is where two tectonic plates are drifting apart. Her discovery shows that tectonic plates exist and that they move. However, she made this discovery while working with Bruce Heezen. At first, he didn't believe her. She showed him maps that she had drawn and she double-checked her work. Finally, he believed her. Then, he published the discovery in 1956 without recognizing her work.

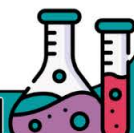


Write the best main idea sentence for the passage.

SCORE-BOARD

ANSWER

GAME BOARD



FAMOUS WOMEN SCIENTISTS FOR 400

Tu Youyou is a Chinese scientist who discovered important medicines for treating malaria. She discovered the medicine by studying ancient Chinese medicine. Herbs and plants are used as medicines in the Chinese culture. She studied texts that were thousands of years old. It took a long time to find the right information and the right herb. Finally, after testing hundreds of herbs, she found one that worked. It's called qinghao, artemisinin, or sweet wormwood.



Write the best main idea sentence for the passage.

SCORE-BOARD

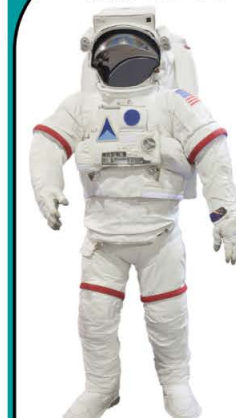
ANSWER

GAME BOARD



FAMOUS WOMEN SCIENTISTS FOR 500

The first black woman in space was Mae Carol Jemison. She is an American engineer, physician, and astronaut! After retiring from NASA, she has done a lot of work to help minority children who are interested in science. In 1994, she ran a space camp for kids to boost their interest in the sciences. She also worked with organizations like Bayer and 4-H to help raise awareness about the importance of agricultural science. She believes that girls and children of color have an important role to play in science.



Write the best main idea sentence for the passage.

SCORE-BOARD

ANSWER

GAME BOARD



CATEGORY 5: EXTREME ENVIRONMENTS

Students are given a passage and they must determine the main idea.

EXTREME ENVIRONMENTS FOR 100

Salar de Uyuni, in Bolivia, is the world's largest salt flat. A salt flat is a large, flat area covered in salt. They form naturally, usually in deserts or where there used to be lakes. Salar de Uyuni covers over 4,000 square miles. In some places, it is 80 miles across. It is so big, you can see it from space!



Write the best main idea sentence for the passage.



SCORE-BOARD

ANSWER

GAME BOARD



EXTREME ENVIRONMENTS FOR 200



The Dead Sea is a salt lake bordered by Jordan, Israel, and West Bank. It is one of the saltiest bodies of water on Earth. The lake is about 9 times as salty as the ocean. So, if you swim in it, you float! About 2 million years ago, the lake may have been part of the ocean, but then, land rose and cut off the lake's connection to the ocean. Then, the lake grew saltier because it doesn't rain much there and only one river runs into the lake. As water evaporates, the salt is left behind.

Write the best main idea sentence for the passage.



SCORE-BOARD

ANSWER

GAME BOARD



EXTREME ENVIRONMENTS FOR 300



Alert is a very small settlement in Nunavut, Canada. It is the northern-most permanent settlement in the world. Most people who live there are scientists or are members of the Canadian Armed Forces. It is so far north that from October to February, there's no real sunlight and from April to September, the sun never sets. It is also very cold there, and snow covers the ground for 10 months of the year. Alert is only 500 miles from the North Pole! No other settlement is so far north.

Write the best main idea sentence for the passage.



SCORE-BOARD

ANSWER

GAME BOARD



EXTREME ENVIRONMENTS FOR 400

A small group of towns in India, called Mawsynram, gets a lot of rain each year. In fact, the area gets an average of over 460 inches of rainfall each year. That's the highest average rainfall in the world. As a result, most days are quite rainy. It's so wet there that people can't even farm! However, it is a beautiful area with lush vegetation, waterfalls, and gorgeous caves.



Write the best main idea sentence for the passage.



SCORE-BOARD

ANSWER

GAME BOARD



EXTREME ENVIRONMENTS FOR 500



Mount Everest is the world's tallest mountain. Because it is so tall, many people try to climb it. Every year, people die trying to make it to the top of the mountain. Several factors make this mountain very dangerous to climb. Near the top, there's very little oxygen, so climbers need canisters of oxygen. There are also places where climbers must climb across chasms. Climbers may die, get sick, or get injured due to falls, frostbite, avalanches, or lack of oxygen.

Write the best main idea sentence for the passage.



SCORE-BOARD

ANSWER

GAME BOARD



ANSWER SLIDES BUILT IN

Questions are all linked to their corresponding answer slides in both versions and also linked back to the question for reference.

EXTREME SPORTS FOR 100

Rock climbing is an extreme sport that requires a lot of skill.



Answers may vary slightly.

SCORE-BOARD

BACK TO QUESTION

GAME BOARD

WEIRD BUGS FOR 200



Giraffe weevils have a unique and involved process for laying eggs.

Answers may vary slightly.

SCORE-BOARD

BACK TO QUESTION

GAME BOARD

FOOD ORIGINS FOR 300



The coffee plant is originally from Eastern Africa.

Answers may vary slightly.

SCORE-BOARD

BACK TO QUESTION

GAME BOARD

FAMOUS WOMEN SCIENTISTS FOR 400

Tu Youyou discovered a malaria medicine after testing hundreds of herbs.



Malaria is a disease transmitted by the bite of infected mosquitoes.

Answers may vary slightly.

SCORE-BOARD

BACK TO QUESTION

GAME BOARD

EXTREME ENVIRONMENTS FOR 500

Mount Everest is a very dangerous mountain to climb.



Answers may vary slightly.

SCORE-BOARD

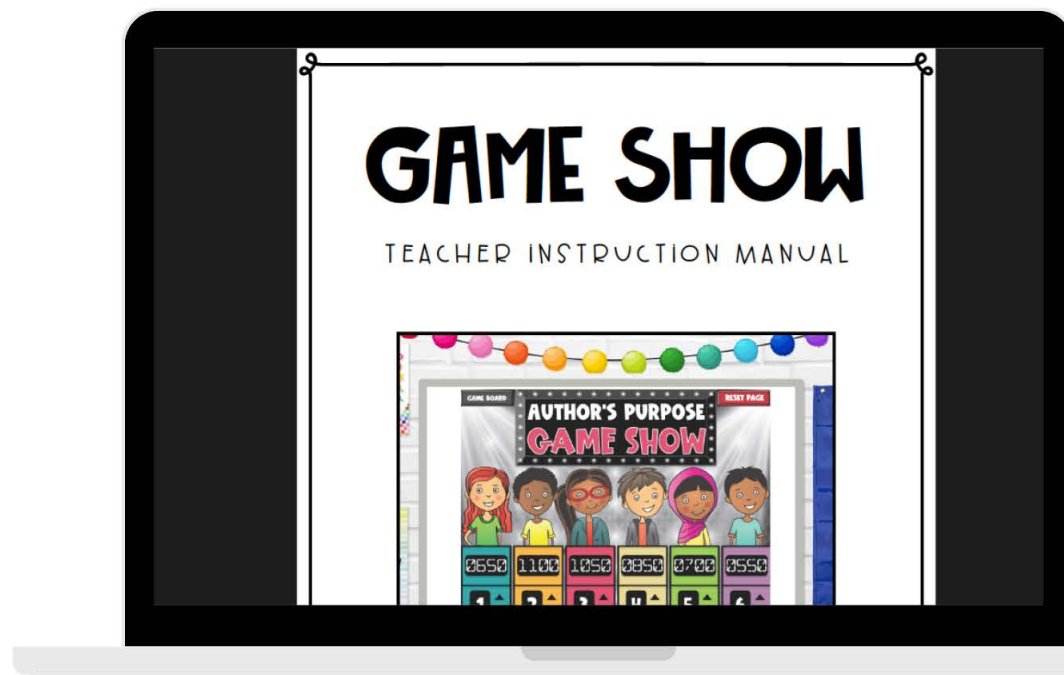
BACK TO QUESTION

GAME BOARD

INCLUDES:

- ✓ EDITABLE QUESTIONS & ANSWERS!
- ✓ POWERPOINT + GOOGLE SLIDES™
- ✓ INTERACTIVE & LINKED FOR EASY GAMEPLAY
- ✓ ANSWER KEY
- ✓ PRINTABLE PASSAGES
- ✓ REVIEW OF KEY CONTENT AND SKILLS
- ✓ TEACHER MANUAL
- ✓ EMAIL SUPPORT

**STUDENTS
WILL BE BEGGING
TO PLAY!**



Just Play-No Prep

FAMOUS WOMEN SCIENTISTS FOR 500



The first black woman in space was Mae Carol Jemison. She is an American engineer, physician, and astronaut! After retiring from NASA, she has done a lot of work to help minority children who are interested in science. In 1994, she ran a space camp for kids to boost their interest in the sciences. She also worked with organizations like Bayer and 4-H to help raise awareness about the importance of agricultural science. She believes that girls and children of color have an important role to play in science.

Write the best main idea sentence for the passage.

WEIRD BUGS FOR 200



Giraffe weevils of Madagascar have a very unique way of laying eggs. The bugs get their name from their very long necks, which the males use for fighting. After mating, the female weevil folds a leaf in half using her strong legs. Then, she begins to roll the leaf up to create a sort of pocket. Then, she lays her egg in the pocket. She then continues to roll the leaf all the way up, securing the roll at the top. Finally, she detaches the leaf so that the egg hatches on the forest floor.

Write the best main idea sentence for the passage.

EXTREME ENVIRONMENTS FOR 300



Alert is a very small settlement in Nunavut, Canada. It is the northern-most permanent settlement in the world. Most people who live there are scientists or are members of the Canadian Armed Forces. It is so far north that from October to February, there's no real sunlight and from April to September, the sun never sets. It is also very cold there, and snow covers the ground 10 months of the year. Alert is only 500 miles from the North Pole! No other settlement is so far north.

Write the best main idea sentence for the passage.

**JUST OPEN THE
GAME AND PLAY!
PERFECT FOR WHOLE GROUP
OR STATION WORK!**



"MY STUDENTS LOVED THIS GAME! IT WAS A GREAT WAY FOR US TO TALK ABOUT MAIN IDEA AND GET THEM THINKING ABOUT IT. THEY HAD FUN WITH IT AND WERE VERY INTERESTED IN EACH TEXT. IT WAS ALSO EASY TO FIGURE OUT AND USE IN CLASS."



"THIS RESOURCE WAS AMAZING! MY STUDENTS ABSOLUTELY LOVED WHEN I WOULD PLAY THIS WITH THEM, TO THE POINT THEY STARTED ASKING ME TO PLAY IT!"