

TEXT FEATURES GAME SHOW

SMART Board

PRINT FEATURES	GRAPHIC FEATURES	ORGANIZATIONAL AIDS	MULTIPLE CHOICE	MIXED BAG
100	100	100	100	100
200	200	200	200	200
300	300	300	300	300
400	400	400	400	400

EDITABLE

SELF-CHECKING

NO PREP

GRADES 3-6



INTERACTIVE REVIEW GAME

WORKING SCOREBOARD

The scoreboard works ONLY in the PowerPoint version. Google Slides, unfortunately, does not have the same capabilities so you will need to track the scores on that version.



INTERACTIVE GAMEBOARD

The point values only disappear after used on the Powerpoint version. Google Slides, unfortunately, does not have the same capabilities so you will need to keep track with the included question tracker.

The gameboard is a grid of 30 question cards arranged in 6 rows and 5 columns. The columns are color-coded and labeled as follows:

- Column 1 (Pink):** PRINT FEATURES
- Column 2 (Orange):** GRAPHIC FEATURES
- Column 3 (Green):** ORGANIZATIONAL AIDS
- Column 4 (Teal):** MULTIPLE CHOICE
- Column 5 (Purple):** MIXED BAG

The rows represent point values: 100, 200, 300, 400, and 500. The 500 row is currently empty. To the right of the grid is a vertical title 'TEXT FEATURES GAME SHOW' with three colored chevrons (teal, purple, pink) above it. Below the title are two buttons: 'SCORE BOARD' and 'RESET PAGE'.

PRINT FEATURES	GRAPHIC FEATURES	ORGANIZATIONAL AIDS	MULTIPLE CHOICE	MIXED BAG
100	100	100	100	100
200	200	200	200	200
300	300	300	300	300
400	400	400	400	400
500	500	500	500	500

EDITABLE QUESTIONS & ANSWERS

All questions and answers are editable, so you can change out the question if you'd rather it be something else. Images and categories are not editable.

QUESTIONS

STORY STRUCTURE FOR 200

Miles grabbed his duffel bag and left the police station in a hurry, ready to get out on his rounds. After driving for a while, he found his suspect. He reached into the passenger's seat for the duffel bag and rummaged for his spy camera, only to find that it was missing! Miles specifically remembered placing the camera in his bag. Tracing his steps in his mind, he only remembered bumping into the new recruit at the front desk. Remotely, Miles activated the spy camera and was surprised to see a plate of tasty donuts in front of the camera. "Ugh, he really thought it was a pen!" Miles sighed, before turning around to return to the police station and retrieve the pen from the rookie officer.

What is the **conflict** of the story?



SCORE-BOARD

ANSWER

GAME BOARD



STORY STRUCTURE FOR 200

Miles grabbed his duffel bag and left the police station in a hurry, ready to get out on his rounds. After driving for a while, he found his suspect. He reached into the passenger's seat for the duffel bag and rummaged for his spy camera, only to find that it was missing! Miles specifically remembered placing the camera in his bag. Tracing his steps in his mind, he only remembered bumping into the new recruit at the front desk. Remotely, Miles activated the spy camera and was surprised to see a plate of tasty donuts in front of the camera. "Ugh, he really thought it was a pen!" Miles sighed, before turning around to return to the police station and retrieve the pen from the rookie officer.

What is the **setting** of the story?



SCORE-BOARD

ANSWER

GAME BOARD



ANSWERS

STORY STRUCTURE FOR 200

(Answers may vary slightly.)

He reached into the passenger's seat for the duffel bag and rummaged for his spy camera, only to find that it was missing!



Bonus question for 100 extra points

What is the genre of the story?



SCORE-BOARD

BONUS ANSWER

BACK TO QUESTION

GAME BOARD



STORY STRUCTURE FOR 200

(Answers may vary slightly.)

Miles is in his car and back and forth from police station.



Bonus question for 100 extra points

What is the genre of the story?



SCORE-BOARD

BONUS ANSWER

BACK TO QUESTION

GAME BOARD



*Examples used are from ELA Skill Review Game Show as a reference and are not specific to this game.

CATEGORY 1: PRINT FEATURES

Students are given print-based text features to identify.

PRINT FEATURES FOR 100

Name the text feature being shown below.

CONTENTS

3-10	Galaxies & The Milky Way
11-32	Our Solar System
33-41	The Earth & Its Moon
42-48	The Sun & Other Stars
49-55	Space Exploration
56-72	The View from Earth

SCORE BOARD

ANSWER

GAME BOARD

PRINT FEATURES FOR 200

Name the text feature being shown below.

A

Amphibian.....1-3, 14, 24

B

Bulges.....17

C

Capillary.....27

Cold-blooded.....12-13, 16, 31

S

Skin.....14, 21, 35

Shed.....14, 21

Spawn.....7-9

T

Tadpole.....17

Timeline.....12-18

SCORE BOARD

ANSWER

GAME BOARD

PRINT FEATURES FOR 300

Name the text feature being shown below.

Shin - the front of the leg bone that runs from the knee to the ankle.

Skin - the outer layer of tissue that covers the entire body.

Skull - the large structure of bones in the head.

Thigh - the part of the leg that runs from the knee to the hip.

Tooth - a hard bony object in the jaw; used for chewing.

SCORE BOARD

ANSWER

GAME BOARD

PRINT FEATURES FOR 400

Name the text feature circled in red.

scalp • torso

scalp - the skin covering the skull; it holds the hair follicles in place.

shin - the front of the leg bone that runs from the knee to the ankle.

skin - the outer layer of tissue that covers the entire body.

skull - the large structure of bones in the head.

thigh - the part of the leg that runs from the knee to the hip.

toe - one of five separate parts at the end of your foot.

tooth - a hard bony object in the jaw; used for chewing.

torso - the main part of the body; it does not include the head, arms, or legs.

SCORE BOARD

ANSWER

GAME BOARD

PRINT FEATURES FOR 500

Name the text feature being shown below.

The Amazing Human Body



Written By: Drew Science

Illustrated By: Julie Penn

Copyright © 2013 • Children's Science Publications

SCORE BOARD

ANSWER

GAME BOARD

CATEGORY 2: GRAPHIC FEATURES

Students are given graphic-based text features to identify.

GRAPHIC FEATURES FOR 100

Name the text feature being shown below.



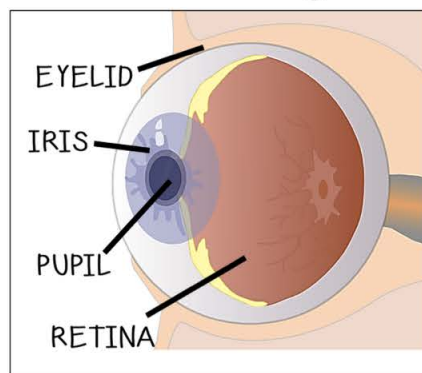
SCORE BOARD

ANSWER

GAME BOARD

GRAPHIC FEATURES FOR 200

Name the text feature being shown below.



SCORE BOARD

ANSWER

GAME BOARD

GRAPHIC FEATURES FOR 300

Name the text feature being shown below.



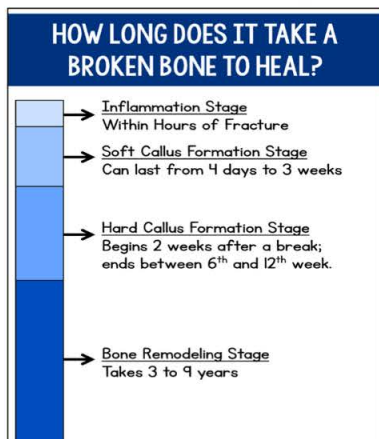
SCORE BOARD

ANSWER

GAME BOARD

GRAPHIC FEATURES FOR 400

Name the text feature being shown below.



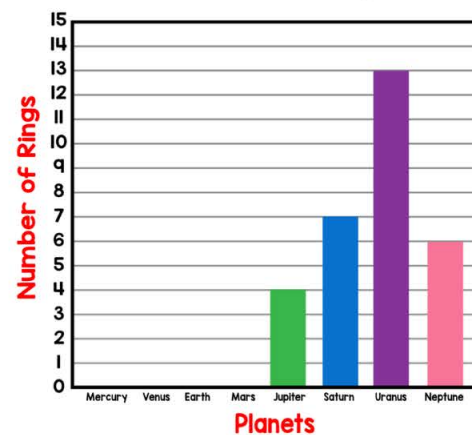
SCORE BOARD

ANSWER

GAME BOARD

GRAPHIC FEATURES FOR 500

Name the text feature being shown below.



SCORE BOARD

ANSWER

GAME BOARD

CATEGORY 3: ORGANIZATIONAL AIDS

Students are given organizational aids types of text features to identify.

ORGANIZATIONAL AIDS FOR 100

Name the text feature circled in red.

Amphibian Types:

- Frogs
- Toads
- Newts
- Salamanders
- Caecilians

SCORE-BOARD

ANSWER

GAME BOARD

ORGANIZATIONAL AIDS FOR 200

Name the text feature circled in red.

The Whale Shark:

World's Largest Fish

What's the biggest fish in the world? It's the whale shark! The whale shark can grow up to 40 feet long, and they weight more than two school buses put together (40 tons).

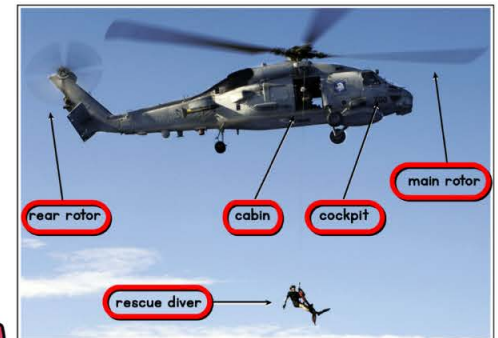
SCORE-BOARD

ANSWER

GAME BOARD

ORGANIZATIONAL AIDS FOR 300

Name the text feature circled in red.



SCORE-BOARD

ANSWER

GAME BOARD

ORGANIZATIONAL AIDS FOR 400

Name the text feature circled in red.



This is a side view of a human brain.

SCORE-BOARD

ANSWER

GAME BOARD

ORGANIZATIONAL AIDS FOR 500

Name the text feature circled in red.

The average adult breathes more than 600 times *each hour*. Adults take more than 20,000 breaths *each day*.

SCORE-BOARD

ANSWER

GAME BOARD

CATEGORY 4: MULTIPLE CHOICE

Students are given any of the previous types of text features to identify with three possible answers choices given..

MULTIPLE CHOICE FOR 100

Name the text feature circled in blue.

Interested in a career as a first responder? Click below to explore information from Learn How to Become.Org:

[Firefighter](#)

[Police Officer](#)

[EMT/Paramedic](#)

A: Hyperlinks

B: Titles

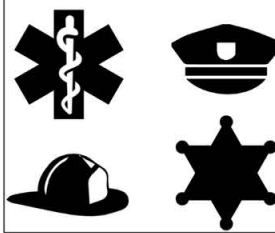
C: Captions

MULTIPLE CHOICE FOR 200

Name the text feature being shown below.

Emergency Services

Click to E-Mail



A: Close-up

B: Icons

C: Photograph

MULTIPLE CHOICE FOR 300

Name the text feature boxed in red.

Search and Rescue:

The First 24 Hours

The most important period of time in a search and rescue mission is the first twenty-four hours.

Most often, search and rescue teams are looking for people

who have survived an incident that may have caused serious injury. If a survivor is hurt, they are most likely to survive if they are found and taken to a hospital within one day of the incident.

Fun Fact:

Since 1970, the U.S. Coast Guard's search and rescue missions have saved more than 200,000 people!

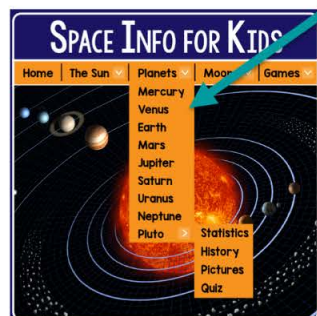
A: Text Box

B: Title

C: Caption

MULTIPLE CHOICE FOR 400

Name the text feature being shown below.



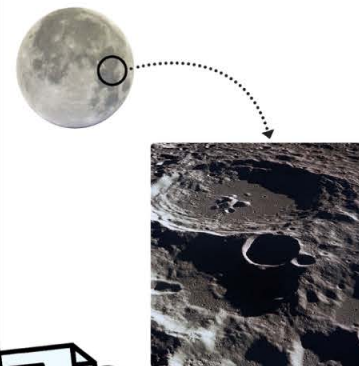
A: Drop Down Menu

B: Title Page

C: Photograph

MULTIPLE CHOICE FOR 500

Name the text feature being shown below.



A: Chart/Graph

B: Caption

C: Close-Up

CATEGORY 5: MIXED BAG

Questions consist of a variety of questions from each of the other categories.

MIXED BAG FOR 100

Name the text feature being shown below.

Frogs are considered one of the most adaptable **species** in the world, since they have roamed the Earth for the past *190 million years*. They can survive on land and in water, and there is at least one species of frog virtually anywhere fresh water can be found. Frogs, like all **amphibians**, are cold-blooded animals, so their body temperature changes as the temperature in their environment changes.

SCORE-BOARD

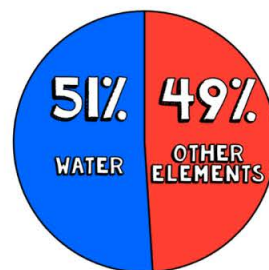
ANSWER

GAME BOARD

MIXED BAG FOR 200

Name the text feature being shown below.

The human body is made of:



SCORE-BOARD

ANSWER

GAME BOARD

MIXED BAG FOR 300

Name the text feature circled in blue.

Central Nervous System

Brain
Your brain controls all functions in the body. This includes things like breathing, having a heartbeat, moving your arms and legs, etc. The brain controls these functions by sending and receiving messages through the nerves.

Spinal Cord
The spinal cord is the main pathway that connects the brain with the peripheral nervous system. It is protected by your spinal column, which is a long series of bones called vertebrae.

A: Subheading

B: Heading

C: Title

SCORE-BOARD

ANSWER

GAME BOARD

MIXED BAG FOR 400

Name the text feature circled in red.

Types of Squid

There are over 300 different types of squid in the world, but they all fall into two categories:

Myopsida

These squid live in very shallow waters. They have suckers on their tentacles.

Oegopsida

These squid live in deeper waters. They have hooks on the end of their tentacles.

SCORE-BOARD

ANSWER

GAME BOARD

MIXED BAG FOR 500

Name the text feature being shown below.

PLANET	AVG. TEMPERATURE
MERCURY	800°F
VENUS	896°F
EARTH	57°F
MARS	-81°F
JUPITER	-202°F
SATURN	-202°F
URANUS	-328°F
NEPTUNE	-328°F

SCORE-BOARD

ANSWER

GAME BOARD

ANSWER SLIDES BUILT IN

Questions are all linked to their corresponding answer slides in both versions and also linked back to the question for reference.

PRINT FEATURES FOR 100

Table of Contents

CONTENTS

3-10	Galaxies & The Milky Way
11-32	Our Solar System
33-41	The Earth & Its Moon
42-48	The Sun & Other Stars
49-55	Space Exploration
56-72	The View from Earth

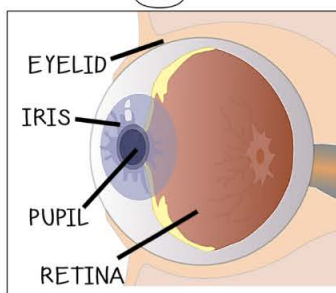
SCORE-BOARD

BACK TO QUESTION

GAME BOARD

GRAPHIC FEATURES FOR 200

Diagram



SCORE-BOARD

BACK TO QUESTION

GAME BOARD

ORGANIZATIONAL AIDS FOR 300

Labels



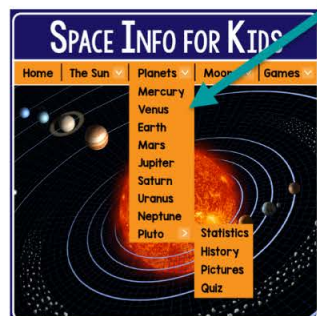
SCORE-BOARD

BACK TO QUESTION

GAME BOARD

MULTIPLE CHOICE FOR 400

Name the text feature being shown below.



A: Drop Down Menu

B: Title Page

C: Photograph

SCORE-BOARD

BACK TO QUESTION

GAME BOARD

MIXED BAG FOR 500

Table

PLANET	AVG. TEMPERATURE
MERCURY	800°F
VENUS	896°F
EARTH	57°F
MARS	-81°F
JUPITER	-202°F
SATURN	-202°F
URANUS	-328°F
NEPTUNE	-328°F

SCORE-BOARD

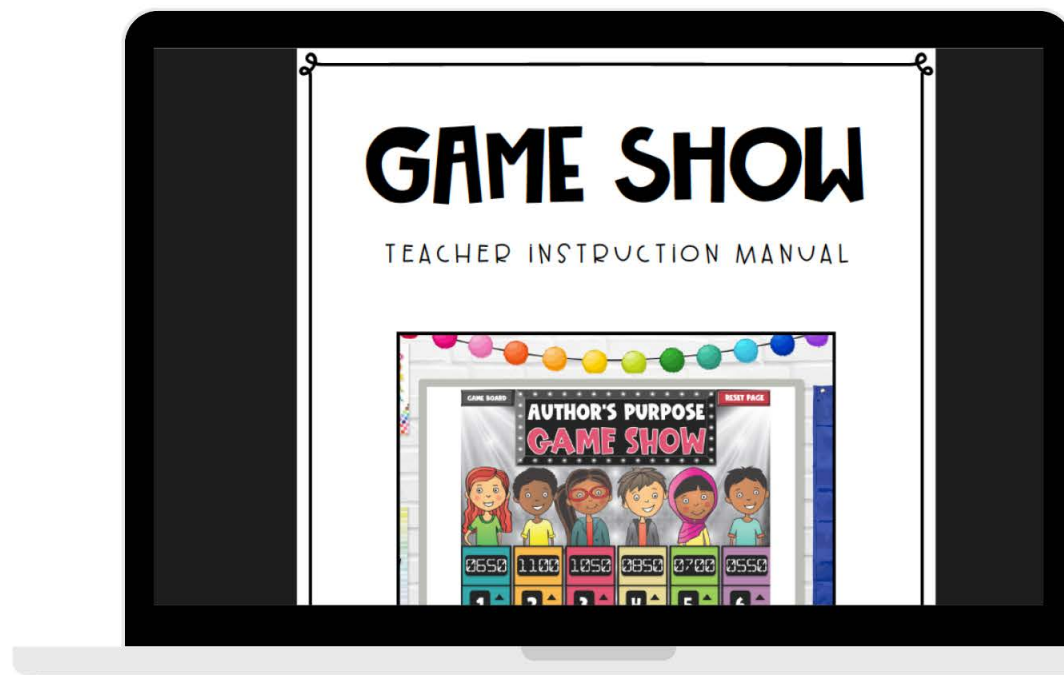
BACK TO QUESTION

GAME BOARD

INCLUDES:

- ✓ EDITABLE QUESTIONS & ANSWERS!
- ✓ POWERPOINT + GOOGLE SLIDES™
- ✓ INTERACTIVE & LINKED FOR EASY GAMEPLAY
- ✓ ANSWER KEY
- ✓ PRINTABLE PASSAGES
- ✓ REVIEW OF KEY CONTENT AND SKILLS
- ✓ TEACHER MANUAL
- ✓ EMAIL SUPPORT

**STUDENTS
WILL BE BEGGING
TO PLAY!**



Just Play-NO Prep

ORGANIZATIONAL AIDS FOR 200
Name the text feature circled in red.

The Whale Shark:

World's Largest Fish

What's the biggest fish in the world? It's the whale shark! The whale shark can grow up to 40 feet long, and they weigh more than two school buses put together (40 tons).

GRAPHIC FEATURES FOR 200
Name the text feature being shown below.

EYELID

IRIS

PUPIL

RETINA

MULTIPLE CHOICE FOR 500
Name the text feature being shown below.

A: Chart/Graph

B: Caption

C: Close-Up

**JUST OPEN THE
GAME AND PLAY!
PERFECT FOR WHOLE GROUP
OR STATION WORK!**



"THIS PRODUCT IS GREAT! I'VE PURCHASED QUITE A FEW OF THESE GAMES AND THEY ARE ALWAYS A HIT WITH MY STUDENTS. I ALSO LOVE HOW THE POINTS ARE DISPLAYED WITHIN THE GAME IN REAL TIME."



"I ABSOLUTELY LOVED THIS GAME, I HAVE BOUGHT FROM THIS CREATOR NUMEROUS TIMES AND IT NEVER FAILS HOW MUCH MY KIDS LOVE THE ACTIVITIES"